



# JUGENDSTIL KATALOG

*Neuheiten Nr. 297*



**orion**

Leuchten mit Stil



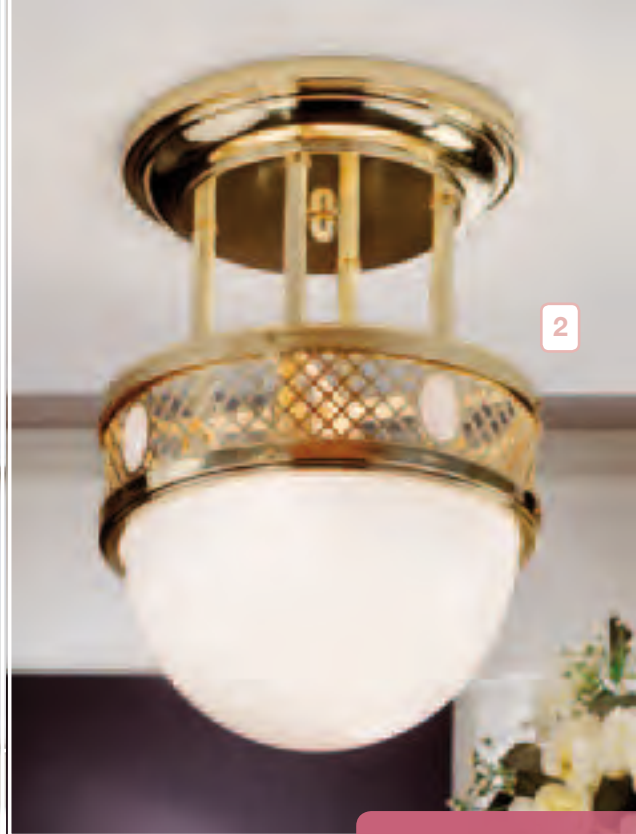
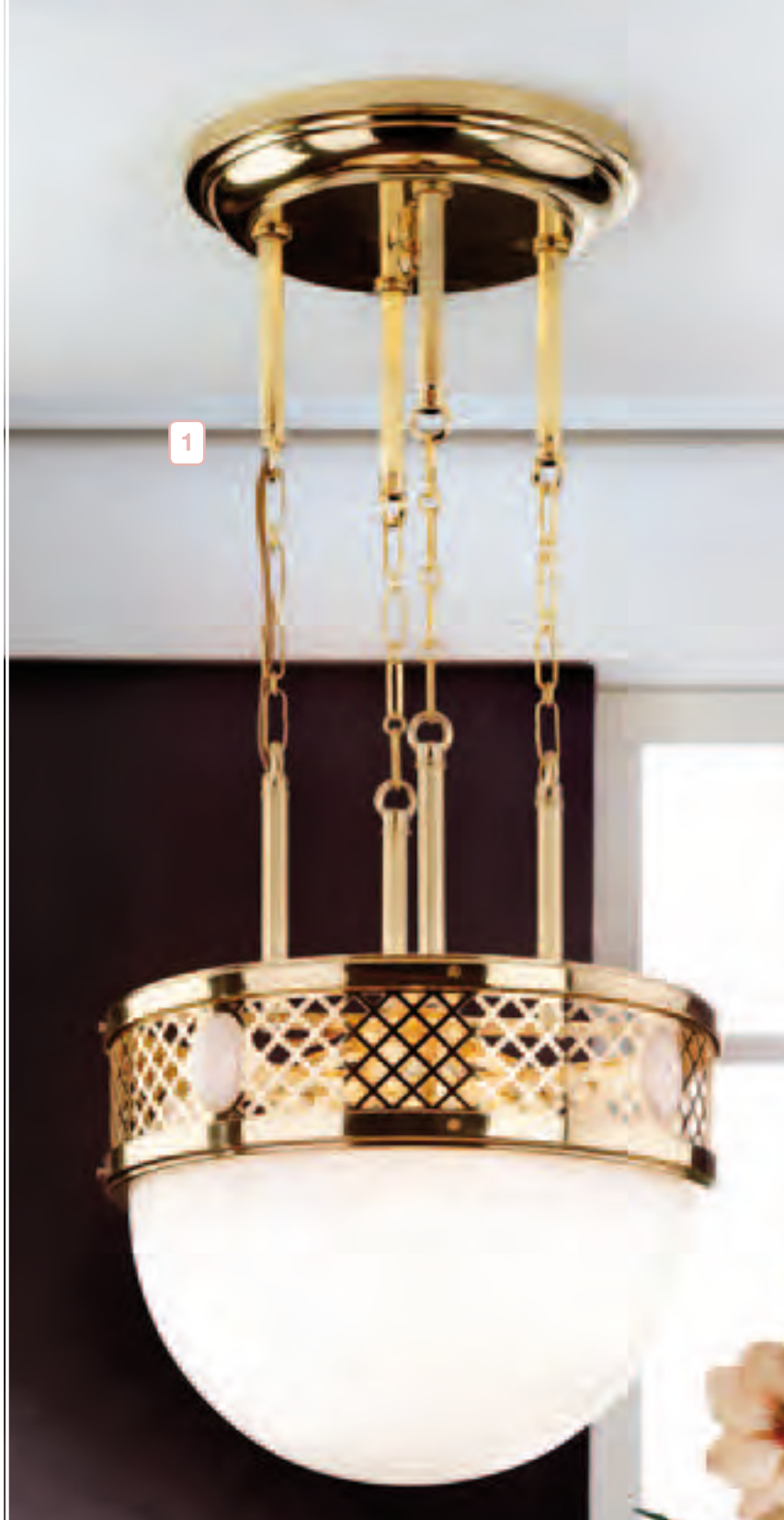
**ALT WIEN**



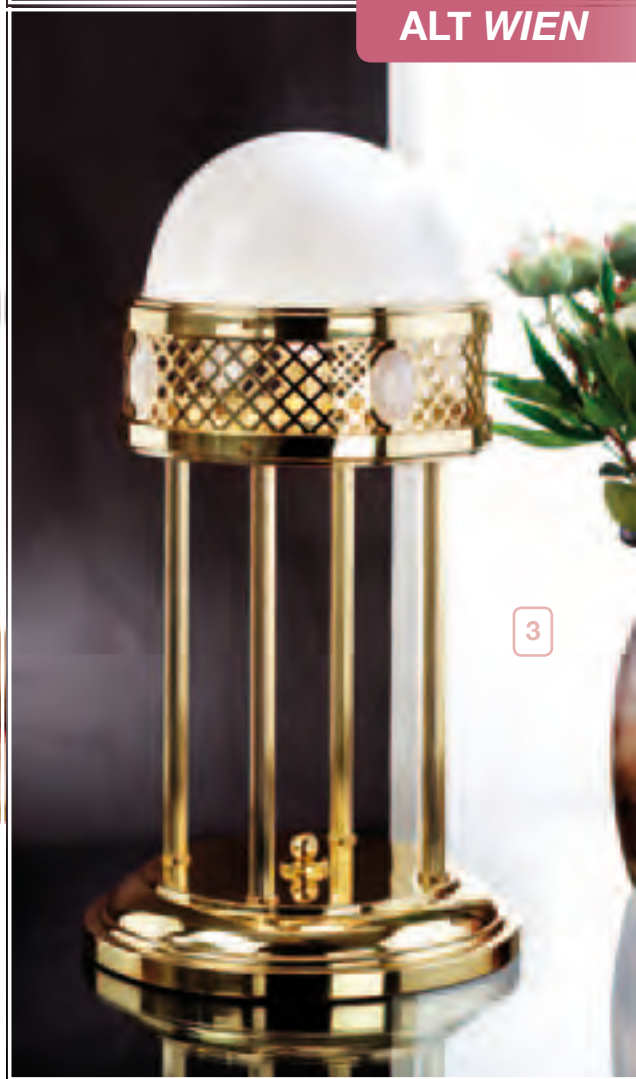
**1**  
**DL 7-556/1/250 Nickel**  
**DL 7-556/1/250 Ms**  
 Ø29cm; H 36cm  
 1 x E27  
 Glas 480 opal

**2**  
**DL 7-544/3/305 Ms**  
 Ø30cm; H 24cm  
 3 x E27  
 Glas 480 opal

**3**  
**DL 7-556/4/400 Ms**  
**DL 7-556/4/400 Nickel**  
 Ø40cm; H 52cm  
 4 x E27  
 Glas 482 opal



**ALT WIEN**



Serie „ALT WIEN“ in

- MESSING
- NICKEL (mit weißen und blauen Steinen)
- PATINA erhältlich.

**1**

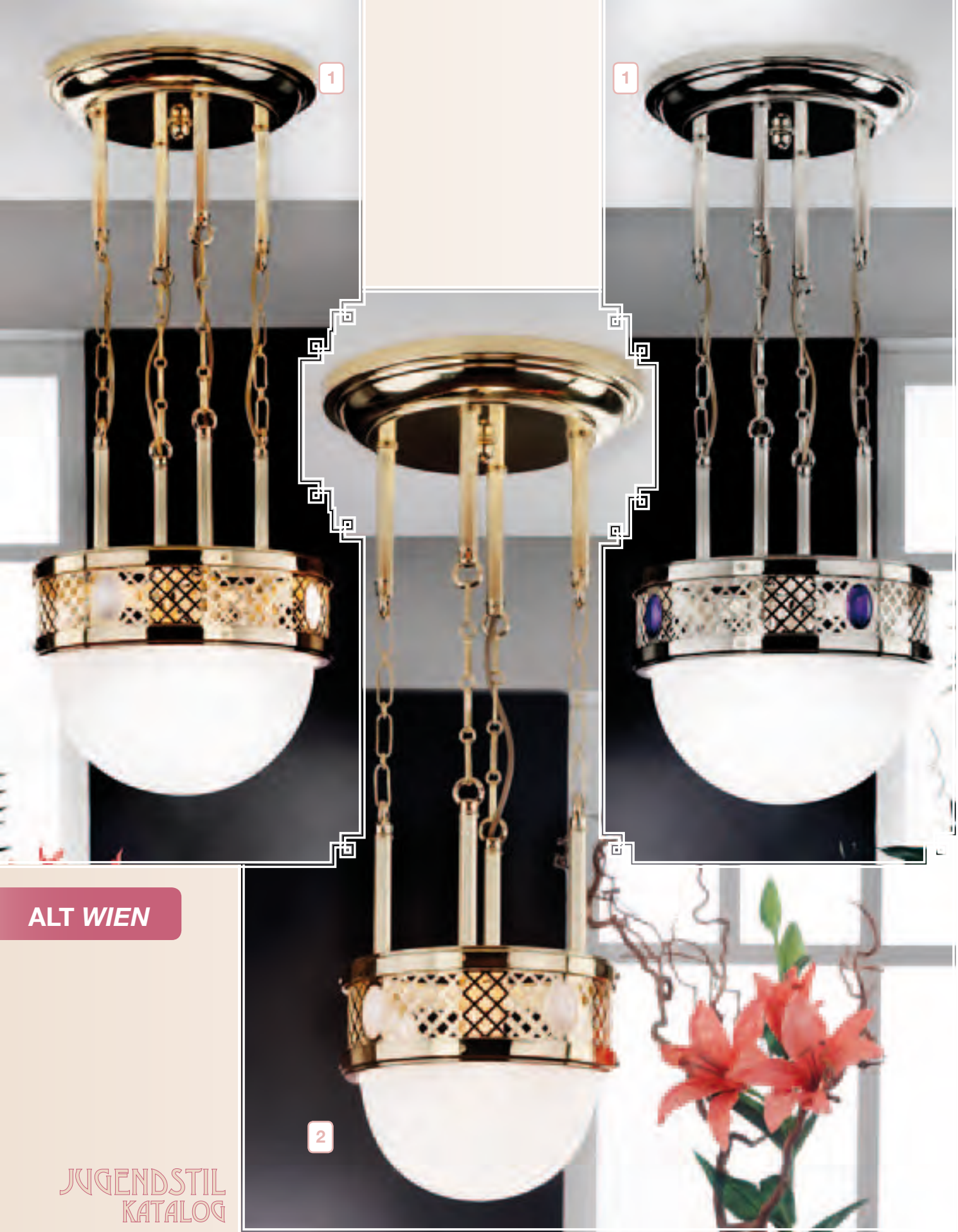
**HL 6-1546/4/400 Ms**  
 Ø40cm; H 83cm  
 4 x E27  
 Glas 482 opal

**2**

**DL 7-556/4/320 Ms**  
 Ø33cm; H 43cm  
 4 x E14  
 Glas 481 opal

**3**

**LA 4-1126/1/250 Ms**  
 Ø29cm; H 56cm  
 1 x E27  
 Glas 480 opal



ALT WIEN

JUGENDSTIL  
KATALOG

1

**HL 6-1546/4/320 Ms**  
**HL 6-1546/4/320 Nickel**  
 Ø33cm; H 77cm  
 4 x E14  
 Glas 481 opal

2

**HL 6-1546/1/250 Ms**  
 Ø29cm; H 74cm  
 1 x E27  
 Glas 480 opal

kleine Abbildung - MS



1

HL 6-1546/9/520 Nickel  
HL 6-1546/9/520 Ms

Ø53cm; H 91cm

9 x E27

Glas 483 opal



JUGENDSTIL  
KATALOG

1

**DL 7-556/9/520 Ms**

Ø53cm; H 69cm

9 x E27

Glas 483 opal



JUGENDSTIL  
KATALOG

1

**STL 12-1128/4/320 Ms**  
**STL 12-1128/4/320 Nickel**

Ø35cm; H 170cm

4 x E14

Glas 481 opal



1



**ALT WIEN**

JUGENDSTIL  
KATALOG



2



3



**1**  
**WA 2-1242/2/250 Ms**  
**WA 2-1242/2/250 Nickel**  
 B 26cm; H 32cm; T 13cm  
 2 x E27  
 2 x Glas 484 opal

**2**  
**WA 2-1242/6/400 Ms**  
 B 40cm; H 47cm; T 20cm  
 6 x E27  
 2 x Glas 486 opal

**3**  
**WA 2-1242/4/320 Ms**  
**WA 2-1242/4/320 Patina**  
 B 33cm; H 39cm; T 16cm  
 4 x E27  
 2x Glas 485 opal

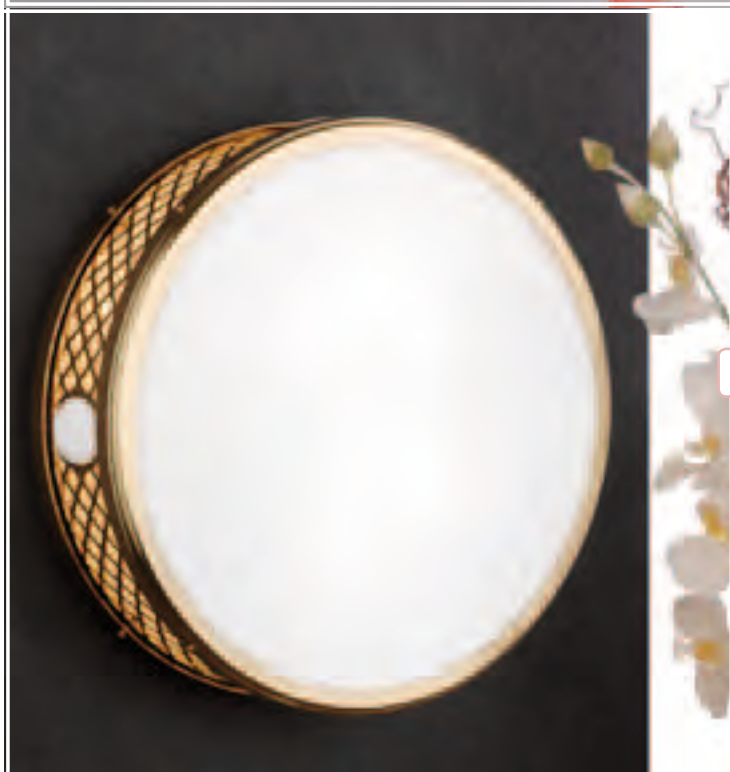




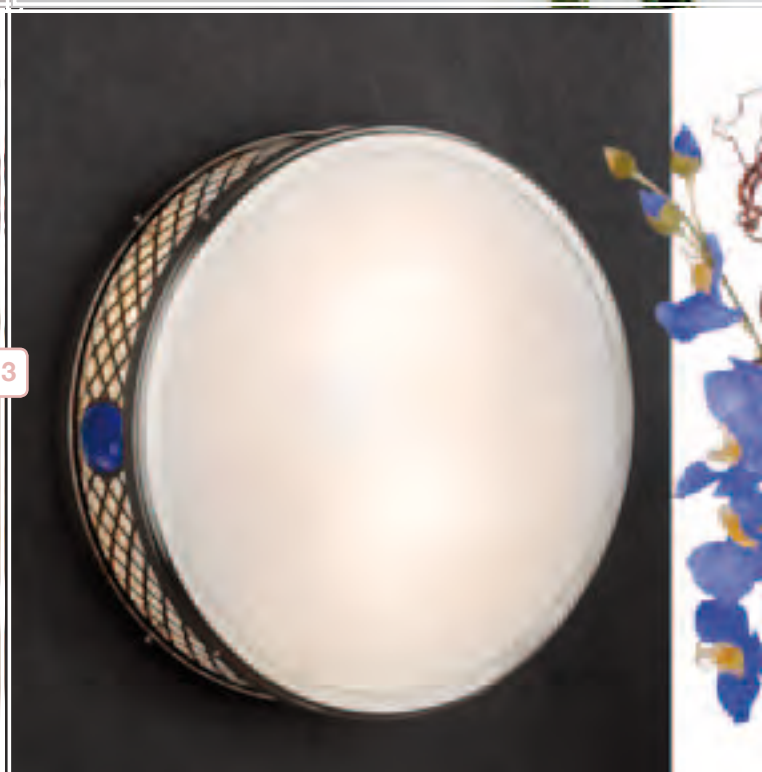
1



2



3



1

**NU 9-381/2/320 Ms**  
**NU 9-381/2/320 Patina**  
 Ø33cm; H 10cm  
 2 x E14  
 Glas 488 opal

2

**NU 9-381/2/250 Ms**  
**NU 9-381/2/250 Nickel**  
 Ø25cm; H 10cm  
 2 x E14  
 Glas 487 opal

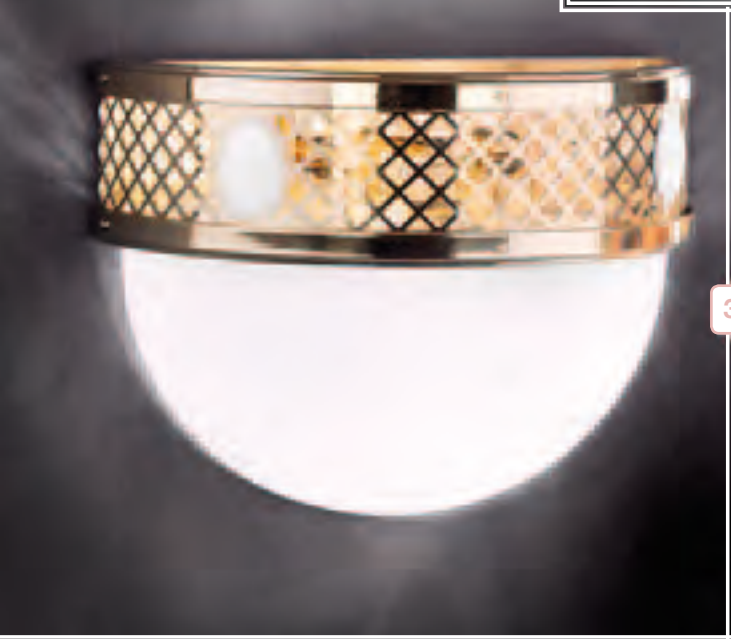
3

**NU 9-381/2/400 Ms**  
**NU 9-381/2/400 Nickel**  
 Ø40cm; H 12cm  
 2 x E14  
 Glas 489 opal



**ALT WIEN**

JUGENDSTIL  
KATALOG



**1**  
**WA 2-1232/1/250 Ms**  
**WA 2-1232/1/250 Patina**  
B 26cm; H 21cm; T 13cm  
1 x E27  
Glas 484 opal

**2**  
**WA 2-1232/2/320 Ms**  
B 33cm; H 24cm; T 16cm  
2 x E27  
Glas 485 opal

**3**  
**WA 2-1232/3/400 Ms**  
**WA 2-1232/3/400 Nickel**  
B 40cm; H 29cm; T 20cm  
3 x E27  
Glas 486 opal



1

kleine Abbildung - PATINA

JUGENDSTIL  
KATALOG

1

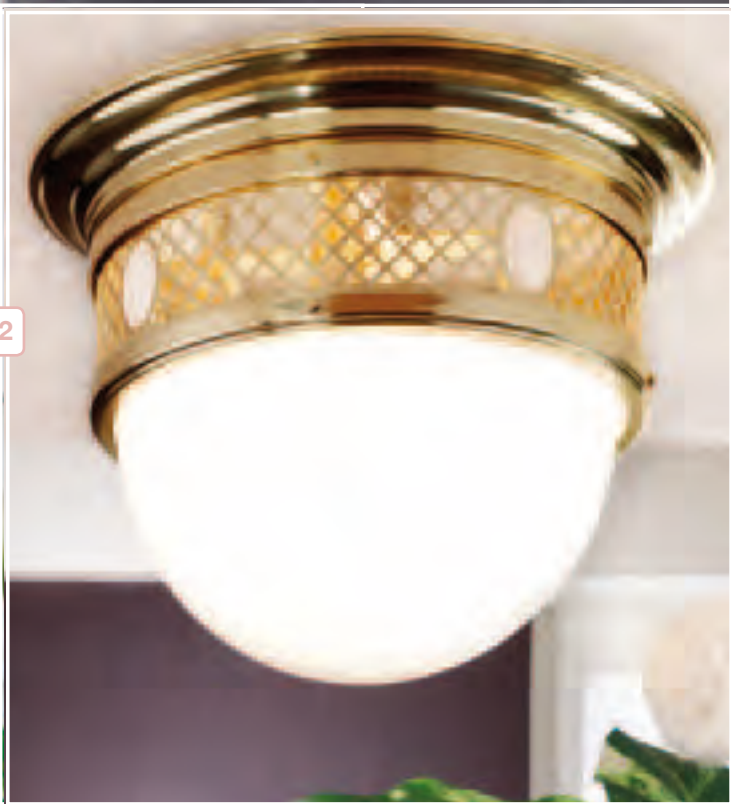
DL 7-544/9/630 Ms  
DL 7-544/9/630 Patina

Ø63cm; H 45cm

9 x E27

Glas 483 opal

kleine Abbildung - NICKEL



1

**DL 7-544/5/480 Nickel**  
**DL 7-544/5/480 Ms**  
 Ø48cm; H 34cm  
 5 x E27  
 Glas 482 opal

2

**DL 7-544/4/390 Nickel**  
**DL 7-544/4/390 Ms**  
 Ø39cm; H 28cm  
 4 x E27  
 Glas 481 opal



1



2

JUGENDSTIL  
KATALOG

1

**LA 4-1125/1/250 Ms**  
**LA 4-1125/1/250 Nickel**  
 Ø25cm; H 23cm  
 1 x E27  
 Glas 480 opal

2

**NU 9-381/4/520 Ms**  
 Ø53cm; H 15cm  
 4 x E27  
 Glas 490 opal



GLAS  
480 opal

Ø 23,5 cm

GLAS  
481 opal

Ø 30,5 cm

GLAS  
482 opal

Ø 38 cm

GLAS  
483 opal

Ø 50 cm



GLAS  
484 opal

23,5 cm x 12 cm



GLAS  
485 opal

30,5 cm x 15 cm



GLAS  
486 opal

38 cm x 19 cm



GLAS  
487 opal

Ø 23,5 cm



GLAS  
488 opal

Ø 30,5 cm



GLAS  
489 opal

Ø 38 cm



GLAS  
490 opal

Ø 50 cm

H 80 cm



**ALT WIEN**

1

**LU 1698/6+3/MS**  
Ø80cm; H 80cm  
9 x E14/40W  
Glas 149 opal

2

**WA 2-1223/1/MS**  
B 22cm H 25cm T 18cm  
1 x E14/40W  
Glas 149 opal



1

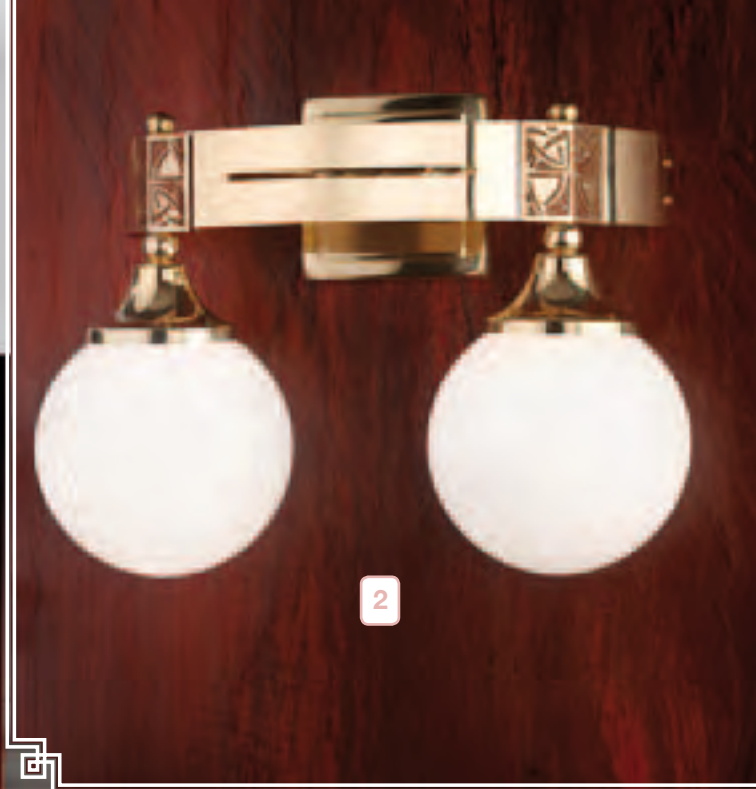
1

**LU 1698/5+1/MS**  
Ø60cm; H 74cm  
6 x E14/40W  
Glas 149 opal

H 74 cm



H 53 cm



ALT WIEN



1

**LU 1698/3/MS**  
Ø50cm; H 53cm  
3 x E14/40W  
Glas 149 opal

2

**WA 2-1223/2/MS**  
B 35cm H 26cm T 17cm  
2 x E14/40W  
Glas 149 opal

1



H 115 cm

1

**LU 1698/9+6+3/MS**

Ø106cm; H 115cm

18 x E14/40W

Glas 149 opal

H 51 cm

1



H 43 cm

2

JUGENDSTIL  
KATALOG

1

**DLU 1698/5+1/MS**  
 Ø60cm; H 51cm  
 6 x E14/40W  
 Glas 149 opal

2

**DLU 1698/3+1/MS**  
 Ø50cm; H 43cm  
 4 x E14/40W  
 Glas 149 opal



H 60cm

Ø90cm

Ø90cm

1

**DLU 1660/8+4+1/alt-MS/Stäbchen**

Ø90cm; H 60cm

12 x E14/40W; 5 x E27/60W

Glas DLU 1660/8+4+1 alt-MS  
(Stäbchengarnitur)

2

**DLU 1660/8+4+1/alt-MS/Opalkugel**

Ø90cm; H 60cm

12 x E14/40W; 5 x E27/60W

Glas 149 opal-sm

H 105 cm

1



∅ 100cm

2



∅ 95cm

1

**LU 1660/8+4+1/alt-MS/Opalkugel**  
 Ø100cm; H 105cm  
 12 x E14/40W; 5 x E27/60W  
 Glas 149 opal-sm

2

**LU 1660/8+4+1/alt-MS/Stäbchen**  
 Ø95cm; H 105cm  
 12 x E14/40W; 5 x E27/60W  
 Glas LU 1660/8+4+1 alt-MS  
 (Stäbchengarnitur)

1



Ø 120cm

1

**LU 1660/10+5+5+1/alt-MS/Stäbchen**

Ø120cm; H 130cm

15 x E14/40W; 6x E27/60W

Glas LU 1660/10+5+5+1 alt-MS  
(Stäbchengarnitur)

2



Ø 125cm

2

**LU 1660/10+5+5+1/alt-MS/Opalkugel**

Ø125cm; H 130cm

15 x E14/40W; 6x E27/60W

Glas 150 opal-sm

H 120 cm

1



Ø 120cm

1

**DLU 1660/12+6+6+1/alt-MS/Opalkugel**  
 Ø120cm; H 78cm  
 18 x E14/40W; 7 x E27/60W  
 Glas 150 opal-sm

2



Ø 120cm

2

**DLU 1660/12+6+6+1/alt-MS/Stäbchen**  
 Ø120cm; H 78cm  
 18 x E14/40W; 7 x E27/60W  
 Glas DLU 1660/12+6+6+1 alt-MS  
 (Stäbchengarnitur)



H 207 cm

JUGENDSTIL  
KATALOG

Ø 232cm

Ø 225cm

1

**LU 1660/20+15+10+5+1/alt-MS/Opalkugel**

Ø232cm; H 207cm

50 x E14/40W; 41x E27/60W

Glas 150 opal-sm

2

**LU 1660/20+15+10+5+1/alt-MS/Stäbchen**

Ø225cm; H 207cm

50 x E14/40W; 41x E27/60W

Glas LU 1660/20+15+10+5+1 alt-MS  
(Stäbchengarnitur)



H 103 cm

1



Ø 200cm

2



JUGENDSTIL  
KATALOG

Ø 200cm

1

**DLU 1660/24+18+12+6+1/alt-MS/Opalkugel**  
 Ø200cm; H 103cm  
 60 x E14/40W; 37 x E27/60W  
 Glas 150 opal-sm

2

**DLU 1660/24+18+12+6+1/alt-MS/Stäbchen**  
 Ø200cm; H 103cm  
 60 x E14/40W; 37 x E27/60W  
 Glas DLU 1660/24+18+12+6+1 alt-MS  
 (Stäbchengarnitur)

1



JUGENDSTIL  
KATALOG

Ø 180cm

1

**LU 1660/15+10+5+1/gold/Opalkugel**

Ø180cm; H 170cm

30 x E14/40W; 21x E27/60W

Glas 150 opal-sm

2



Ø 173cm

2

**LU 1660/15+10+5+1/gold/Stäbchen**

Ø173cm; H 170cm

30 x E14/40W; 21x E27/60W

Glas LU 1660/15+10+5+1 alt-MS  
(Stäbchengarnitur)

H 170cm

H 170 cm

JUGENDSTIL  
KATALOG

Ø 173cm

1

**LU 1660/15+10+5+1/gold/Schliffkugel**

Ø173cm; H 170cm

30 x E14/40W; 21x E27/60W

Glas 470 klar-Schliff



H 85 cm

## ADELE



H 80 cm

1

**DLU 1660/18+12+3/alt-MS-oval/Stäbchen**  
 200x120cm; H 85cm  
 33 x E14/40W; 16x E27/60W  
 Glas DLU 1660/18+12+3 alt-MS  
 (Stäbchengarnitur)

2

**DLU 1660/18+12+3/alt-MS-oval/Opalkugel**  
 200x120cm; H 80cm  
 33 x E14/40W; 16x E27/60W  
 Glas 149 opal-sm

H 58 cm



ADELE

H 54 cm



1

**DLU 1660/12+4/gold-oval/Opalkugel**  
145x63cm; H 58cm  
12 x E14/40W; 3 x E27/60W  
Glas 149 opal-sm

2

**DLU 1660/12+4/gold-oval/Stäbchen**  
145x63cm; H 64cm  
12 x E14/40W; 3 x E27/60W  
Glas DLU 1660/12+4 gold  
(Stäbchengarnitur)

JUGENDSTIL  
KATALOG

1



∅ 160cm

1

**DLU 1660/18+12+6+1/alt-MS/Opalkugel**

∅160cm; H 85cm

36 x E14/40W; 19 x E27/60W

Glas 150 opal-sm

2



∅ 160cm

2

**DLU 1660/18+12+6+1/alt-MS/Stäbchen**

∅160cm; H 85cm

36 x E14/40W; 19 x E27/60W

Glas DLU 1660/18+12+6+1 alt-MS  
(Stäbchengarnitur)

# Inhaltsverzeichnis

|  |    |
|--|----|
| DL 7-544/3/305 Ms                      | 2  |
| DL 7-544/4/390 Ms                      | 12 |
| DL 7-544/4/390 Nickel                  | 12 |
| DL 7-544/5/480 Ms                      | 12 |
| DL 7-544/5/480 Nickel                  | 12 |
| DL 7-544/9/630 Ms                      | 11 |
| DL 7-544/9/630 Patina                  | 11 |
| DL 7-556/1/250 Ms                      | 2  |
| DL 7-556/1/250 Nickel                  | 2  |
| DL 7-556/4/320 Ms                      | 3  |
| DL 7-556/4/400 Ms                      | 2  |
| DL 7-556/4/400 Nickel                  | 2  |
| DL 7-556/9/520 Ms                      | 6  |
| DLU 1660/8+4+1/alt-MS/Opalkugel        | 20 |
| DLU 1660/8+4+1/alt-MS/Stäbchen         | 20 |
| DLU 1660/12+4/gold-oval/Opalkugel      | 27 |
| DLU 1660/12+4/gold-oval/Stäbchen       | 27 |
| DLU 1660/12+6+6+1/alt-MS/Opalkugel     | 23 |
| DLU 1660/12+6+6+1/alt-MS/Stäbchen      | 23 |
| DLU 1660/18+12+3/alt-MS-oval/Opalkugel | 26 |
| DLU 1660/18+12+3/alt-MS-oval/Stäbchen  | 26 |
| DLU 1660/24+18+12+6+1/alt-MS/Opalkugel | 25 |
| DLU 1660/24+18+12+6+1/alt-MS/Stäbchen  | 25 |
| DLU 1698/3+1/MS                        | 19 |
| DLU 1698/5+1/MS                        | 19 |
| HL 6-1546/1/250 Ms                     | 4  |
| HL 6-1546/4/320 Ms                     | 4  |
| HL 6-1546/4/320 Nickel                 | 4  |
| HL 6-1546/4/400 Ms                     | 3  |
| HL 6-1546/9/520 Ms                     | 5  |
| HL 6-1546/9/520 Nickel                 | 5  |
| LA 4-1125/1/250 Ms                     | 13 |
| LA 4-1125/1/250 Nickel                 | 13 |
| LA 4-1126/1/250 Ms                     | 3  |
| LU 1660/8+4+1/alt-MS/Opalkugel         | 21 |
| LU 1660/8+4+1/alt-MS/Stäbchen          | 21 |
| LU 1660/10+5+5+1/alt-MS/Opalkugel      | 22 |
| LU 1660/10+5+5+1/alt-MS/Stäbchen       | 22 |
| LU 1660/20+15+10+5+1/alt-MS/Opalkugel  | 24 |
| LU 1660/20+15+10+5+1/alt-MS/Stäbchen   | 24 |
| LU 1698/3/MS                           | 17 |
| LU 1698/5+1/MS                         | 16 |
| LU 1698/6+3/MS                         | 15 |
| LU 1698/9+6+3/MS                       | 18 |
| NU 9-381/2/250 Ms                      | 9  |
| NU 9-381/2/250 Nickel                  | 9  |
| NU 9-381/2/320 Ms                      | 9  |
| NU 9-381/2/320 Patina                  | 9  |
| NU 9-381/2/400 Ms                      | 9  |
| NU 9-381/2/400 Nickel                  | 9  |
| NU 9-381/4/520 Ms                      | 13 |
| STL 12-1128/4/320 Ms                   | 7  |
| STL 12-1128/4/320 Nickel               | 7  |
| WA 2-1223/1/MS                         | 15 |
| WA 2-1223/2/MS                         | 17 |
| WA 2-1232/1/250 Ms                     | 10 |
| WA 2-1232/1/250 Patina                 | 10 |
| WA 2-1232/2/320 Ms                     | 10 |
| WA 2-1232/3/400 Ms                     | 10 |
| WA 2-1232/3/400 Nickel                 | 10 |
| WA 2-1242/2/250 Ms                     | 8  |
| WA 2-1242/2/250 Nickel                 | 8  |
| WA 2-1242/4/320 Ms                     | 8  |
| WA 2-1242/4/320 Patina                 | 8  |
| WA 2-1242/6/400 Ms                     | 8  |



# orion

Leuchten mit Stil



## ORION - LICHT - SÜD

1230 Wien  
Oberlaaer Straße 281-283  
Tel.: 01/616 68 30  
Fax: 01/616 71 45



## LEUCHTENZENTRUM

1071 Wien  
Neubaugasse 23  
Tel.: 01/523 17 06  
Fax: 01/523 17 07



## ORION - LICHT - NORD

2201 Gerasdorf bei Wien  
Brünner Straße/Holz-Steiner-Straße  
Tel.: 02246/200 35,  
Fax: 02246/200 44



## ORION - OUTLET-CENTER

1230 Wien  
Oberlaaer Straße 321  
Tel.: 01/615 08 05  
Fax: 01/615 08 06



## ORION - LICHT - LINZ-URFAHR

4040 Linz  
Freistädter Straße 30  
Tel.: 0732/73 08 05  
Fax: 0732/73 08 06



## ORION - LICHT - KÄRNTEN

9020 Klagenfurt  
St. Veiter Str./Krassnigstr.  
Tel.: 0463/51 50 71  
Fax: 0463/51 50 70



## ORION - LICHT - GRAZ-OST

8010 Graz  
Klosterwiesgasse 16  
Tel.: 0316/82 75 94  
Fax: 0316/82 75 956



## ORION - LICHT - GRAZ-SÜD

8053 Graz  
Kärntner Straße 165  
Tel.: 0316/272 181  
Fax: 0316/272 184



## MOLECZ - FÉNY BUDAPEST

H-1113 Budapest  
Karolina út 17.  
Tel.: 0036/1/385 22 12  
Fax: 0036/1/385 16 42



## ORION PRAHA SVÍTIDLA

CZ-252 43 PRŮHONICE  
Uhříněveská 581  
Tel.: 00420/2677 50 950  
Fax: 00420/2677 50 952



## ORION SLOVAKIA

SK-83101 Bratislava  
Vajnorská 97/Odborárska  
Tel.: 00421/2/444 55 204  
Fax: 00421/2/444 54 044



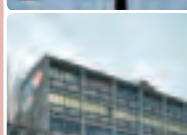
## ORION PRAHA RUŽYNĚ

161 00 Praha 6 - RUŽYNĚ  
Karlovarská 28/1106  
Tel.: 00420 235314894-5  
Fax: 00420 235314896



## ORION LEUCHTENFABRIK

Oberlaaer Str. 284  
A-1230 Wien  
Tel.: 0043-1/616 67 54, 616 68 29  
Fax: 0043-1/615 64 65



## EXPORT

Oberlaaer Str. 281-283  
A-1230 Wien  
Telefon: 0043-1/616 80 91  
Telefax: 0043-1/616 71 40  
e-mail: export@orion.co.at

## VERKAUF MITTEL- UND WESTEUROPA

Telefon: 0043-1/616 68 30  
Telefax: 0043-1/616 71 45  
E-mail: info@orion.co.at  
Internet: <http://www.orion.co.at>

NEUES  
ORION - LICHTHAUS  
ERÖFFNUNG 05/2011

