

ORION LEUCHTENFABRIK

Vienna - Austria

e-mail: info@orion.co.at

Internet: www.orion.co.at

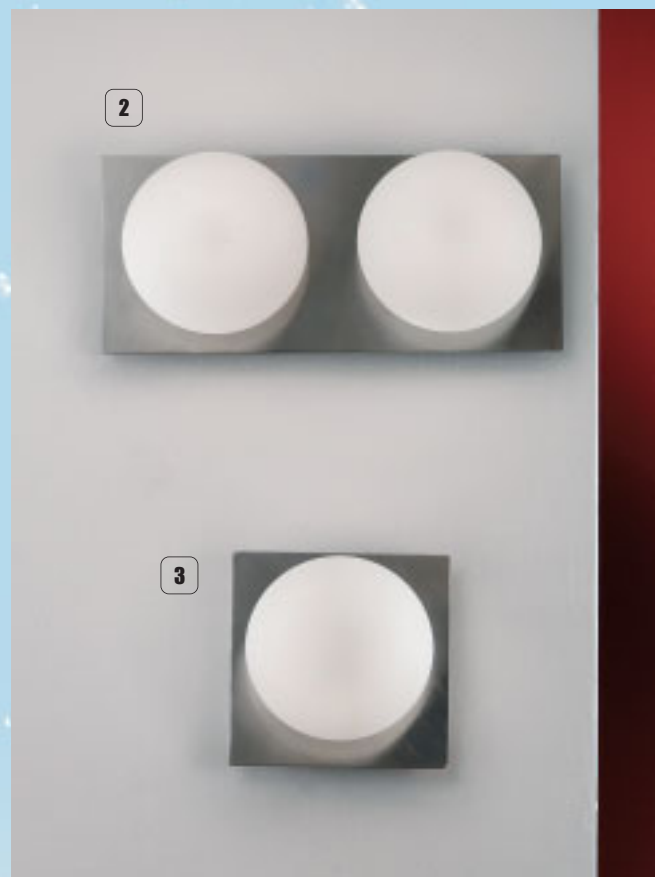
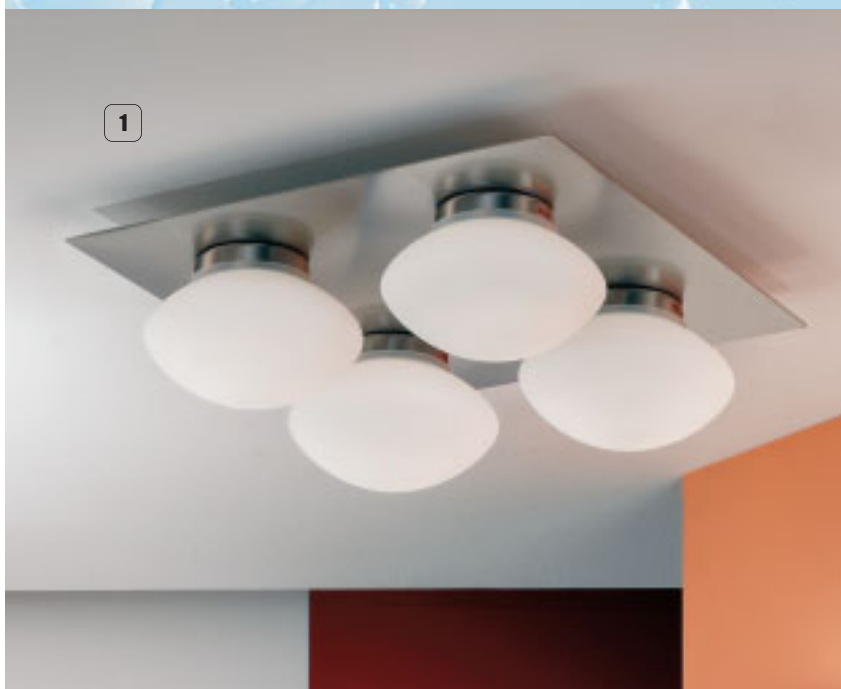
LICHT AMBIENTE FÜR DAS BAD

Kat.-Nr. 291B

The Orion logo features the word "orion" in a white, lowercase, sans-serif font. The letter "o" is replaced by a stylized yellow and white light fixture icon. A thin white horizontal line is positioned below the text.

orion

Leuchten mit Stil



1 DL 7-452/4
Satin
31x31 cm.
Inkl. 4xG9
max je 40W
IP44 ▲

2 WA 2-1113/2
Satin
31x15 cm.
Inkl. 2xG9
max je 40W
IP44 ▲

3 WA 2-1113/1
Satin
15x15 cm.
Inkl. G9
max 40W
IP44 ▲

4 NU 9-366/23
satin
Ø 23 cm.
1xE27,
IP44 ▲

5 NU 9-366/29
satin
Ø 28,5 cm.
2xE27,
IP44 ▲



- 1** NU 9-365/26
MS-matt
Ø 26 cm.
1xE27
IP44 ▲
- 2** NU 9-365/26
chrom
Ø 26 cm.
1xE27
IP44 ▲
- 3** NU 9-365/26
satin
Ø 26 cm.
1xE27
IP44 ▲
- 4** NU 9-365/32
MS-matt
Ø 32 cm.
2xE27
IP44 ▲
- 5** NU 9-365/32
chrom
Ø 32 cm.
2xE27
IP44 ▲
- 6** NU 9-365/32
satin
Ø 32 cm.
2xE27
IP44 ▲



- 7** WA 2-1145/1
chrom
H 23,5 cm.
T 16 cm.
inkl. G9/max.
25W, IP44 ▲
- 8** WA 2-1145/1
satin
H 23,5 cm.
T 16 cm.
inkl. G9/max.
25W, IP44 ▲
- 9** WA 2-1146/1
chrom
H 22,5 cm.
T 13,5 cm.
inkl. G9/max.
25W, IP44 ▲
- 10** WA 2-1146/1
satin
H 22,5 cm.
T 13,5 cm.
inkl. G9/max.
25W, IP44 ▲





3

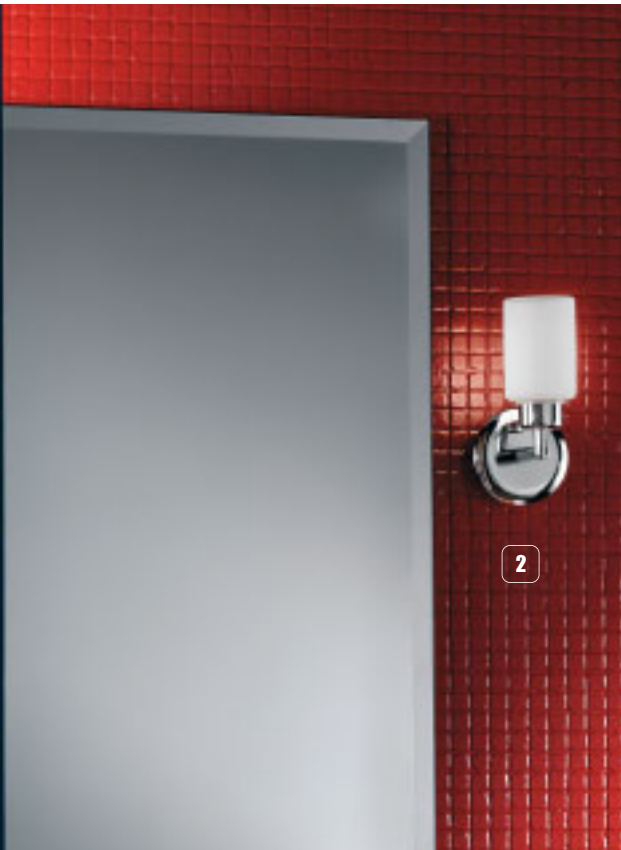
1

4 AL 11-1106/1
Edelstahl
 H 25 cm.
 B 6 cm.
 T 9 cm.
IP44 , inkl.
 G9/max. 25W


5 AL 11-1107/2
Edelstahl
 H 36,5 cm.
 B 7 cm.
 T 10,6 cm.
IP44 , inkl.
 2xG9/max. je 25W

6 AL 11-1108/2
Edelstahl
 B 16,5 cm.
 H 31,7 cm.
 T 10,5 cm.
IP44 , inkl.
 2xG9/max. je 25W

7 AL 11-1110/1
Edelstahl
 H 38 cm.
 B 7 cm.
 T 12 cm.
IP44 , inkl.
 G9/max. 25W



2

1 WA 2-1144/1
MS-matt
 Ø 6,7 cm.
 H 16,5 cm.
 inkl. G9/40W,
IP44 

2 WA 2-1144/1
chrom
 Ø 6,7 cm.
 H 16,5 cm.
 inkl. G9/40W,
IP44 

3 WA 2-1144/1
satin
 Ø 6,7 cm.
 H 16,5 cm.
 inkl. G9/40W,
IP44 




6

5


7

4



1 Soff 3-460/2 Chrom
 L 25,5 cm.
 B 10 cm.
 T 7 cm.
IP44 
 Inkl. 2xG9/40W

2 Soff 3-460/2 Satin
 L 25,5 cm.
 B 10 cm.
 T 7 cm.
IP44 
 Inkl. 2xG9/40W


3 Soff 3-460/3 Chrom
 L 41 cm.
 B 10 cm.
 T 7 cm.
IP44 
 Inkl. 3xG9/40W

4 Soff 3-460/3 Satin
 L 41 cm.
 B 10 cm.
 T 7 cm.
IP44 
 Inkl. 3xG9/40W



1 Str 10-405 Chrom/EBL
 Ø 11 cm.
 Einbauleuchte
 Downlight
 Inkl. G9/max 40W
IP44 

2 DL 7-451/4 Chrom
 30x30 cm.
 Inkl. 4xG9
 max je 40W
IP44 

3 WA 2-1111/1 Chrom
 B 14 cm.
 H 11,5 cm.
 Inkl. G9/max 40W
IP44 

4 WA 2-1112/3 Chrom
 L 52,5 cm.
 Inkl. 3xG9
 max je 40W
IP44 



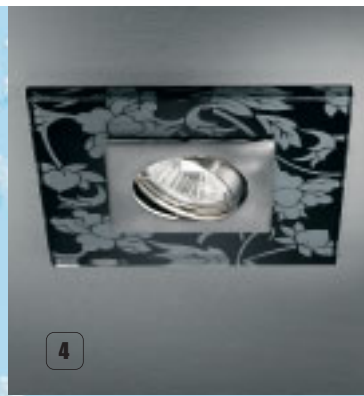
1



2



3



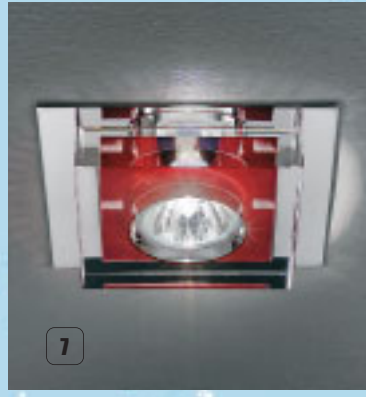
4



5



6



7



8



9



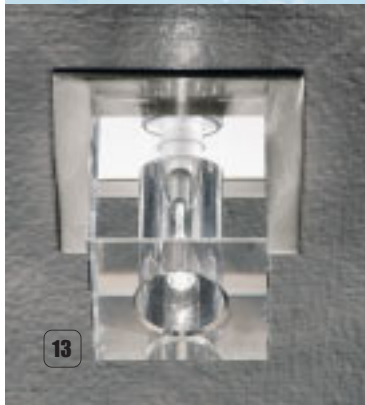
10



11



12



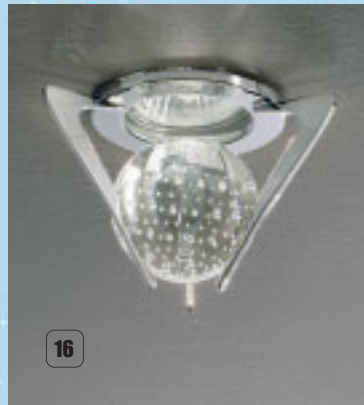
13



14



15



16

1 STR 10-418
weiß/EBL
15x15 cm.
ET 11 cm.
DA 7,3 cm.
exkl. MR16/50W
exkl. Trafo

2 STR 10-418
schwarz/EBL
15x15 cm.
ET 11 cm.
DA 7,3 cm.
exkl. MR16/50W
exkl. Trafo

3 STR 10-418
rot/EBL
15x15 cm.
ET 11 cm.
DA 7,3 cm.
exkl. MR16/50W
exkl. Trafo

4 STR 10-418
Dekor/EBL
15x15 cm.
ET 11 cm.
DA 7,3 cm.
exkl. MR16/50W
exkl. Trafo

5 Str 10-416
klar/EBL
12,8x12,8 cm.
ET 11 cm.
DA 10,5x10,5 cm.
exkl. MR16/50W
exkl. Trafo

6 Str 10-416
schwarz/EBL
12,8x12,8 cm.
ET 11 cm.
DA 10,5x10,5 cm.
exkl. MR16/50W
exkl. Trafo

7 Str 10-416
rot/EBL
12,8x12,8 cm.
ET 11 cm.
DA 10,5x10,5 cm.
exkl. MR16/50W
exkl. Trafo

8 Str 10-417/2
klar/EBL
24,4x12,8 cm.
ET 11 cm.
DA 10,5x21 cm.
exkl. 2xMR16/50W
exkl. Trafo

9 Str 10-417/2
schwarz/EBL
24,4x12,8 cm.
ET 11 cm.
DA 10,5x21 cm.
exkl. 2xMR16/50W
exkl. Trafo

10 Str 10-417/2
rot/EBL
24,4x12,8 cm.
ET 11 cm.
DA 10,5x21 cm.
exkl. 2xMR16/50W
exkl. Trafo

11 STR 10-398
Satin/EBL
Ø 9,7 cm.
DA 6 cm.
ET 7,5 cm.
Inkl. 12V/20W

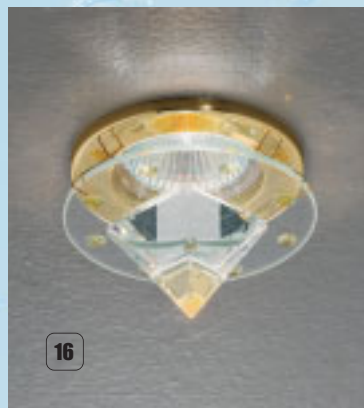
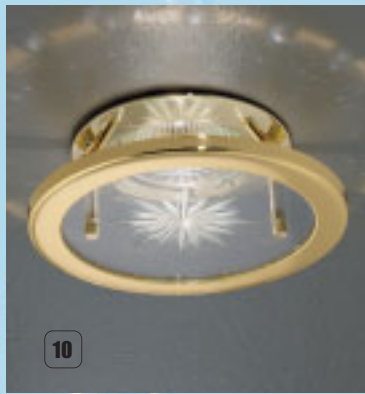
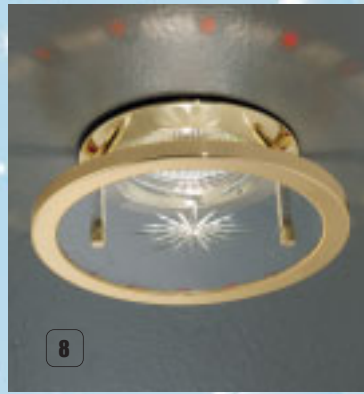
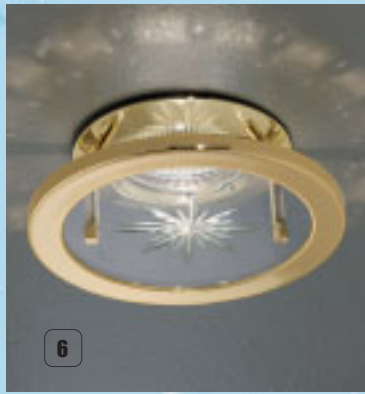
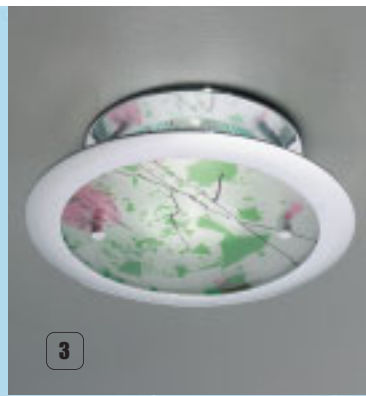
12 STR 10-401
Satin/EBL
Ø 6,2 cm.
DA 6 cm.
ET 7,5 cm.
Inkl. 12V/20W

13 STR 10-397
Satin/EBL
5x5 cm.
DA 6 cm.
ET 7,5 cm.
Inkl. 12V/20W

14 STR 10-400
Satin/EBL
5,3x9 cm.
DA 6 cm.
ET 7,5 cm.
Inkl. G9/25W

15 STR 10-399
Satin/EBL
Ø 9 cm.
DA 6 cm.
ET 7,5 cm.
Inkl. 12V/20W

16 STR 10-340
Chrom/EBL
Ø 11 cm.
DA 5,5 cm.
ET 6,5 cm.
Exkl. Hi-Spot 50W



1 STR 10-340
Gold/EBL
Ø 11 cm.
DA 5,5 cm.
ET 6,5 cm.
Exkl. Hi-Spot 50W

2 STR 10-303
Chrom/klar
Ø 11,2 cm.
DA 6,5 cm.
ET 6,5 cm.
Exkl. MR16/50W

3 STR 10-307
Chrom/EBL
Ø 11,5 cm.
DA 6,5 cm.
ET 6,5 cm.
Exkl. MR16/50W

4 STR 10-305
Blau/EBL
Ø 20 cm.
DA 6,5 cm.
ET 6,5 cm.
Exkl. MR16/50W

5 STR 10-306
Amber/EBL
Ø 20 cm.
DA 6,5 cm.
ET 6,5 cm.
Exkl. MR16/50W

6 STR 10-303
Gold/klar
Ø 11,2 cm.
DA 6,5 cm.
ET 6,5 cm.
Exkl. MR16/50W

7 STR 10-303
Gold/topas
Ø 11,2 cm.
DA 6,5 cm.
ET 6,5 cm.
Exkl. MR16/50W

8 STR 10-303
Gold/rubin
Ø 11,2 cm.
DA 6,5 cm.
ET 6,5 cm.
Exkl. MR16/50W

9 STR 10-303
Gold/grün
Ø 11,2 cm.
DA 6,5 cm.
ET 6,5 cm.
Exkl. MR16/50W

10 STR 10-303
Gold/blau
Ø 11,2 cm.
DA 6,5 cm.
ET 6,5 cm.
Exkl. MR16/50W

11 STR 10-380
Chrom/EBL
Ø 8,5 cm.
DA 5,5 cm.
ET 6 cm.
Exkl. MR16/50W

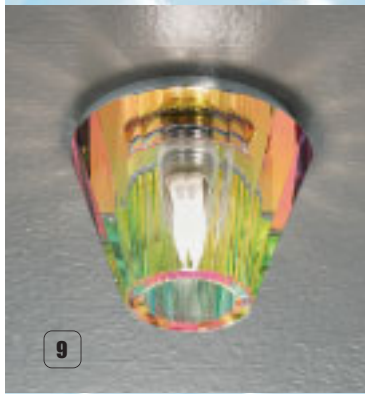
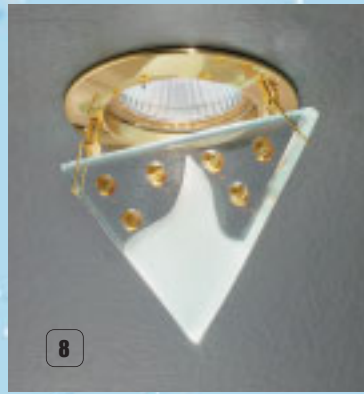
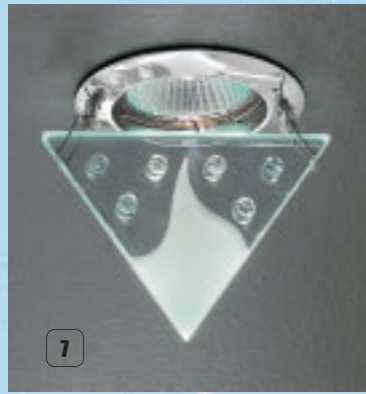
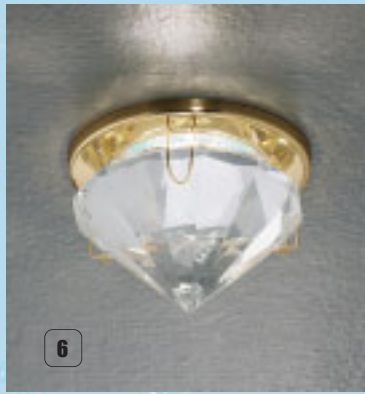
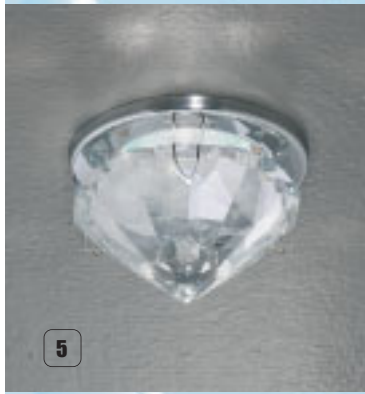
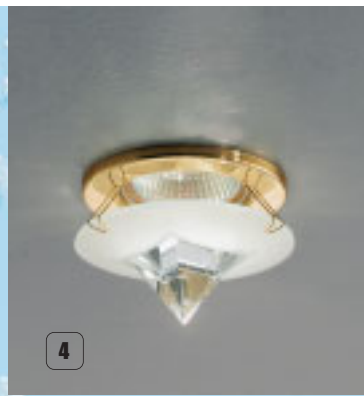
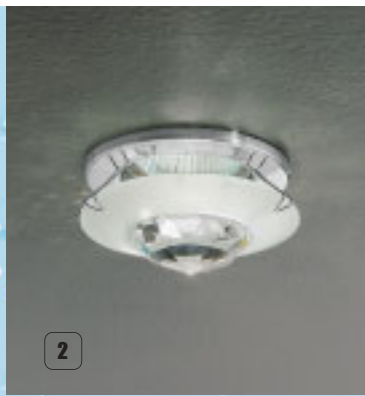
12 STR 10-380
Gold/EBL
Ø 8,5 cm.
DA 5,5 cm.
ET 6 cm.
Exkl. MR16/50W

13 STR 10-377
Chrom/EBL
Ø 8,8 cm.
DA 5,5 cm.
ET 6,5 cm.
Exkl. MR16/50W

14 STR 10-377
Gold/EBL
Ø 8,8 cm.
DA 5,5 cm.
ET 6,5 cm.
Exkl. MR16/50W

15 STR 10-345
Chrom/EBL
Ø 8,5 cm.
DA 5,5 cm.
ET 6,5 cm.
Exkl. MR16/50W

16 STR 10-345
Gold/EBL
Ø 8,5 cm.
DA 5,5 cm.
ET 6,5 cm.
Exkl. MR16/50W



1 STR 10-285
Gold
 Ø 8,5 cm.
 DA 5,5 cm.
 ET 6,5 cm.
 Exkl. MR16/50W

2 STR 10-285
Chrom
 Ø 8,5 cm.
 DA 5,5 cm.
 ET 6,5 cm.
 Exkl. MR16/50W

3 STR 10-286
Chrom
 Ø 8,5 cm.
 DA 5,5 cm.
 ET 6,5 cm.
 Exkl. MR16/50W

4 STR 10-286
Gold
 Ø 8,5 cm.
 DA 5,5 cm.
 ET 6,5 cm.
 Exkl. MR16/50W

5 STR 10-344
Chrom/EBL
 Ø 8 cm.
 DA 5,5 cm.
 ET 7 cm.
 Exkl. MR16/50W

6 STR 10-344
Chrom/EBL
 Ø 8 cm.
 DA 5,5 cm.
 ET 7 cm.
 Exkl. MR16/50W

7 STR 10-350
Chrom/EBL
 Ø 7,8 cm.
 DA 6,5 cm.
 ET 6,5 cm.
 Exkl. MR16/50W

8 STR 10-350
Gold/EBL
 Ø 7,8 cm.
 DA 6,5 cm.
 ET 6,5 cm.
 Exkl. MR16/50W

9 STR 10-391
Chrom/EBL
 Ø 8 cm.
 DA 4,5 cm.
 ET 13,5 cm.
 Exkl. G9/40W

10 STR 10-391
Gold/EBL
 Ø 8 cm.
 DA 4,5 cm.
 ET 13,5 cm.
 Exkl. G9/40W

11 STR 10-346
Chrom/EBL
 Ø 8 cm.
 DA 6,5 cm.
 ET 7 cm.
 Exkl. 12V/20W

12 STR 10-346
Gold/EBL
 Ø 8 cm.
 DA 6,5 cm.
 ET 7 cm.
 Exkl. 12V/20W